

Introduction to LeSS

despaling organizations to turn on a dime for a dime

Dhaval Panchal

- ❖ Founder, Evolve Agility <https://evolveagility.com>
- ❖ 18 years of industry experience
- ❖ Business Agility, Agile, Design Thinking, Lean
- ❖ Practitioner, Entrepreneur, Coach, Trainer
- ❖ Contact: dhaval.panchal@evolveagility.com
- ❖ Twitter: @evolveagility

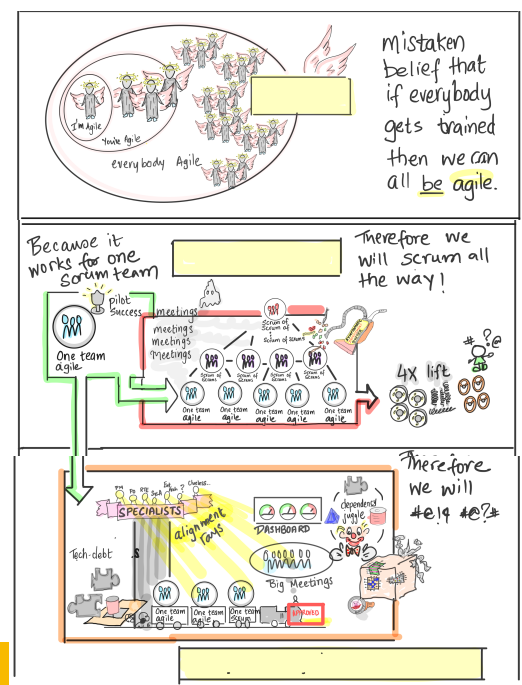


What is Large Scale Scrum (LeSS)?

Organizational Design Approach to De-Scale Organizations

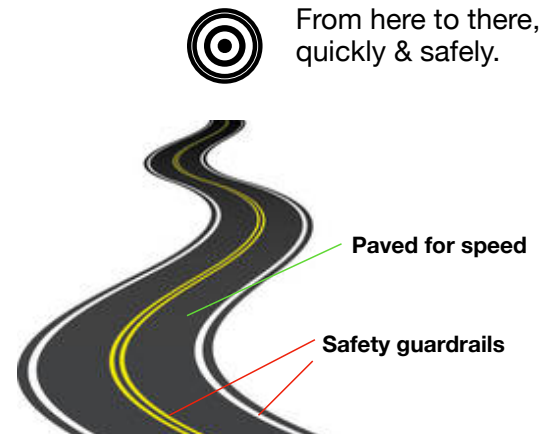
it's about figuring out how to apply the principles, purpose, elements, and elegance of Scrum in a large-scale context, as simply as possible.

What is scaling?



System Optimizing Goal

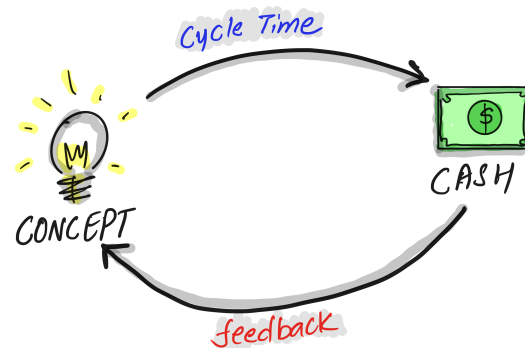
- ❄️ Optimize for some outcome, without violating some constraints
- ❄️ Every organization system optimizes for some goal. (Implicit or Explicit)



LeSS Optimizing Goal

Turn on a dime for a dime

- ❄️ Value delivery..therefore..decrease transaction cost
- ❄️ Adaptability..therefore..decrease cost of change



Impact on Transaction Cost

❄ increase in # of Proxy roles



❄ increase in # of Hand offs



❄ increase in # of Multi-Site development teams



❄ decrease in # of Dependencies



❄ increase in # of Coordinator roles



Impact on Cost of Change

❄ Increase in Product Owner authority over backlog



❄ Increase in Size of requirements batch (scope)



❄ Improvement in quality of Automated tests



❄ Increase in degree of team understanding of customer needs



❄ Increase in degree of architectural coupling



LeSS descales organizational complexity

❁ Dissolving unnecessary complex organization solutions

❁ Solving in simpler ways



LeSS is for learning organization with adaptability NOT for local efficiency.

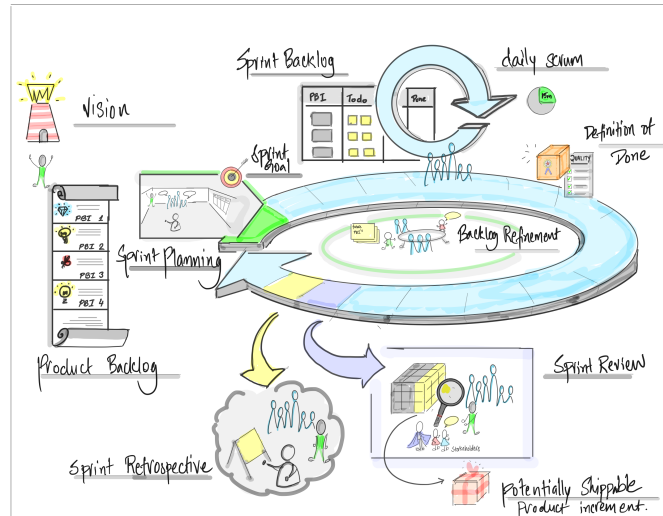
Large Scale Scrum (Less) is Scrum

Mechanics of Scrum

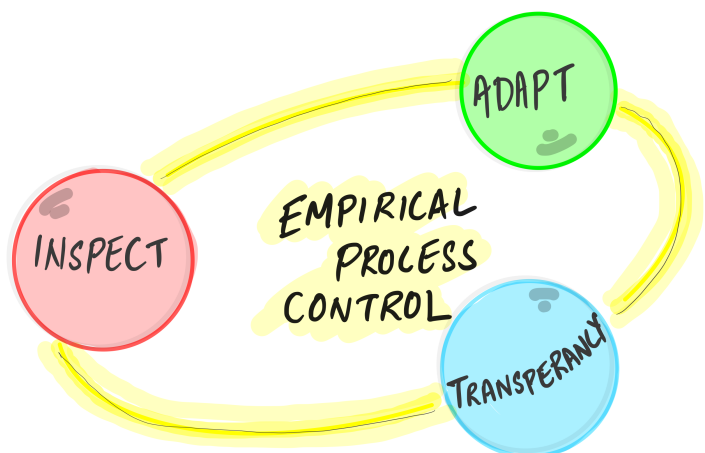
Roles

Events

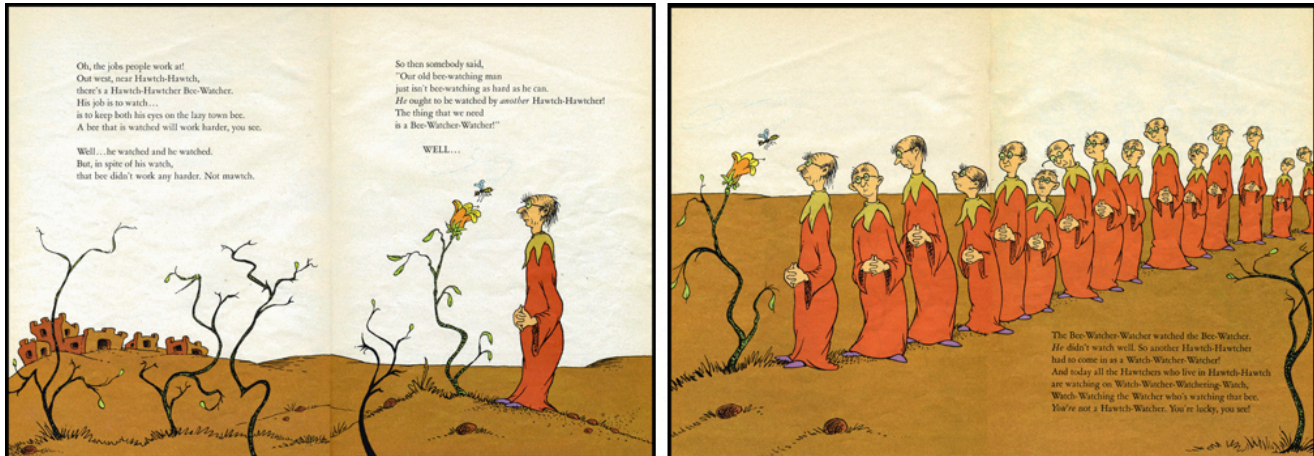
Artifacts



Scaling the essence of Scrum

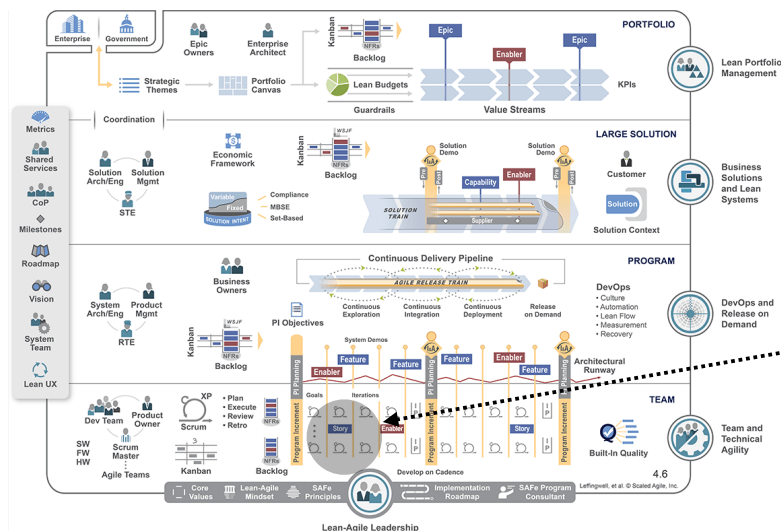


Conventional Management



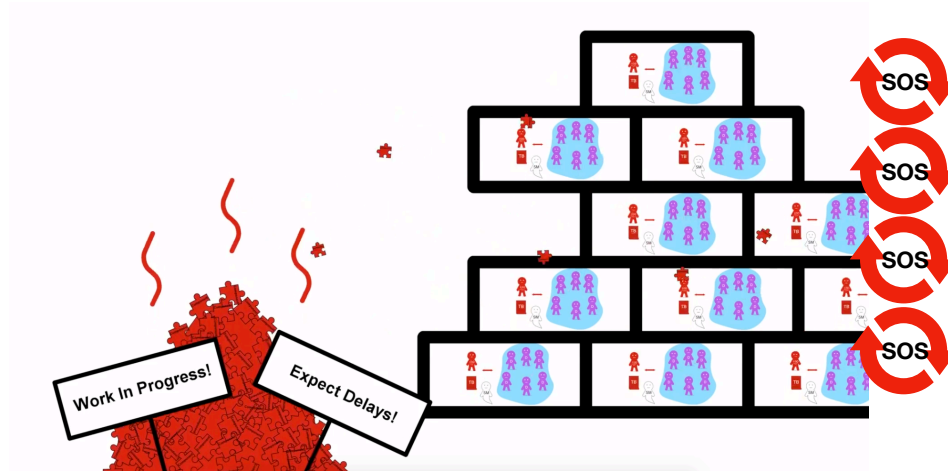
Source: <https://blog.odd-e.com/yilv/2018/08/seeing-system-dynamics-in-organizational-change-4-the-best-time-to-de-scale.html>

Burying scrum under conventional management is not scaling scrum



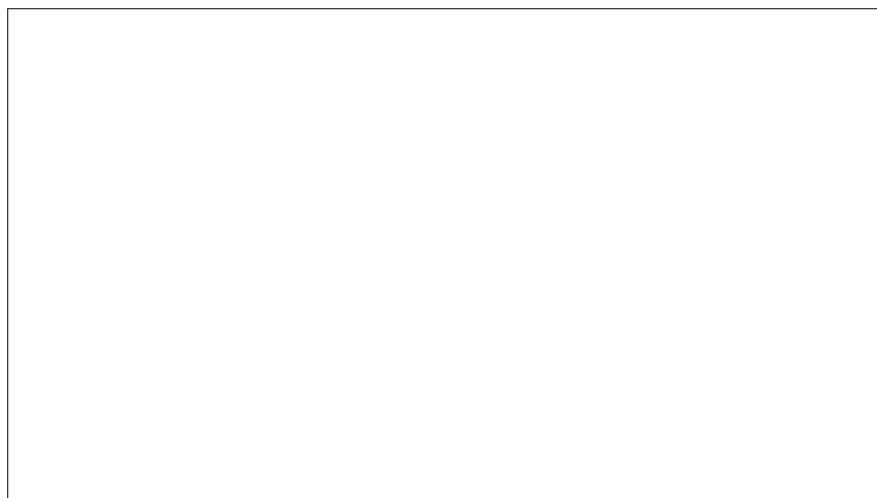
scrum here

Copy Paste Scrum is not Scaling Scrum



Credit: Michael James - How misconceptions about PO role harm - <https://www.youtube.com/watch?v=cr2rjaGmUzo>

Large Scale Scrum (LeSS)

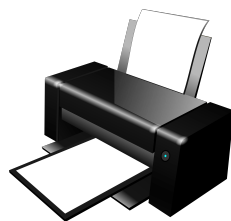


Do more with less ..



Bad News

Existing skills is #1 constraint
in your organization



Functionality of a resource
never improves on its own.

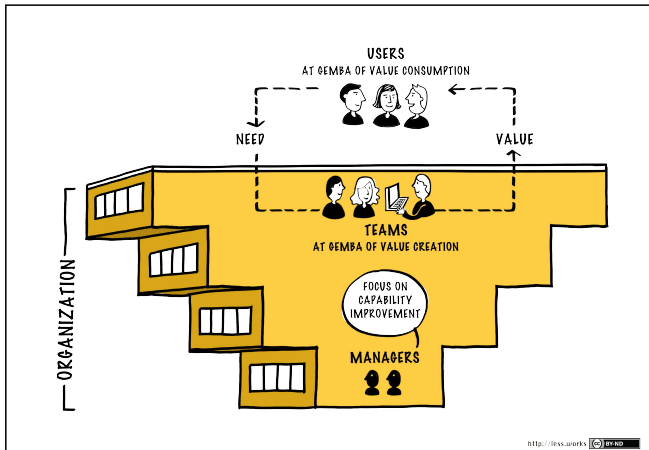
Good News

People have capability to
learn new skills



Create learning wherever it is
constrained

LeSS Organization



- ❄ More responsible teams with fewer role distinctions
- ❄ More customer focus, more collaboration with fewer artifacts
- ❄ More learning, more ownership, more meaningful work, more fun with less process

Build up, don't ..



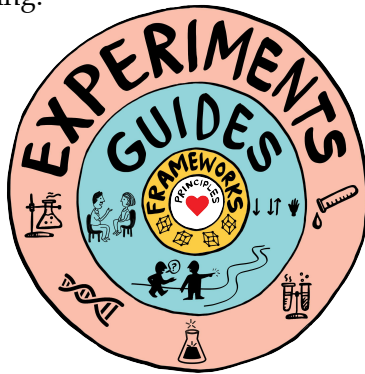
Mail order from outside consultants



Pick and choose as if it were a buffet of best practices

LeSS Complete Picture

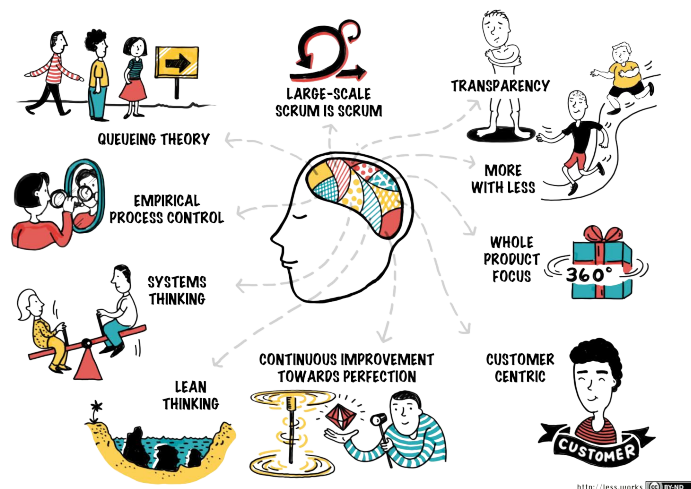
Like scrum, LeSS is deliberately incomplete; it leaves space for vast situational learning.



LeSS is more than a set of principles and experiments. It also provides a framework with rules. The LeSS Rules define what is LeSS (and what isn't) and they provide a concrete framework for applying LeSS.

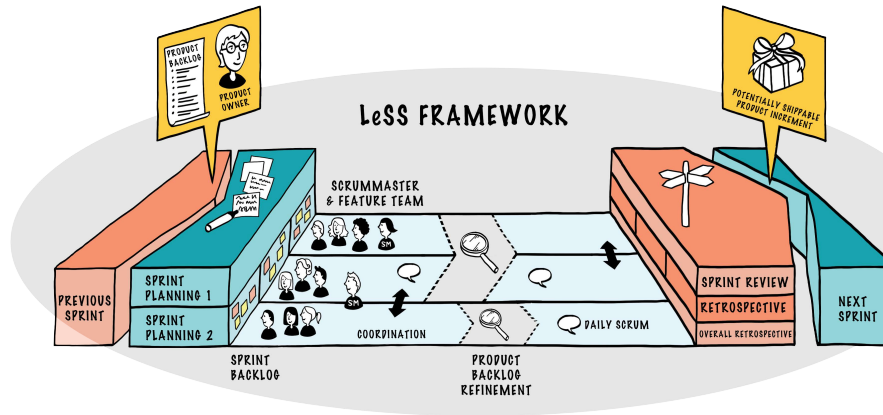
Within the LeSS Framework, product groups can apply the experiments and discover what works best for them at a certain moment.

LeSS Principles



<http://less.works> 

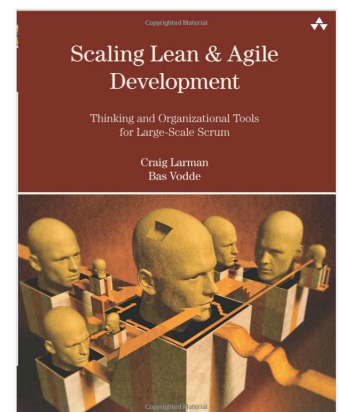
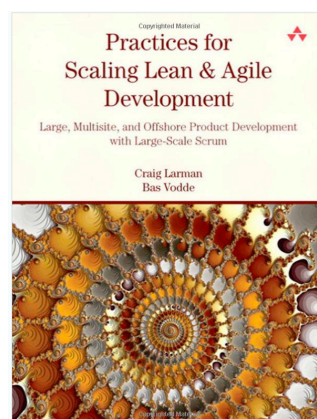
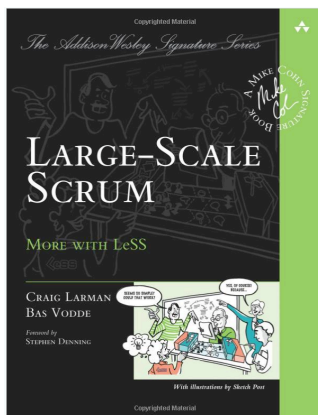
LeSS Framework



<http://less.works>

Learn More

<https://less.works>

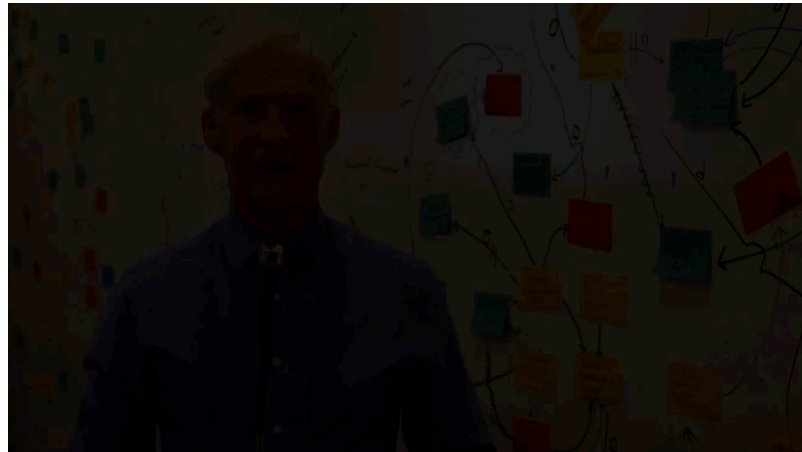


Certified LeSS Practitioner Course

July 29-31, Houston, TX - brought to you by Evolve Agility



Craig Larman
Co-creator of LeSS



Learn More

LeSS Friendly Certified Scrum
Master® Courses

❁ January 30-31, The Woodlands,
TX

❁ February 21-22, Houston, TX

❁ March 27-28, Houston, TX

One day Certified LeSS Basics Course.



Contact office@evolveagility.com

We will schedule one as soon as there is sufficient
interest in Houston area.

Q&A

